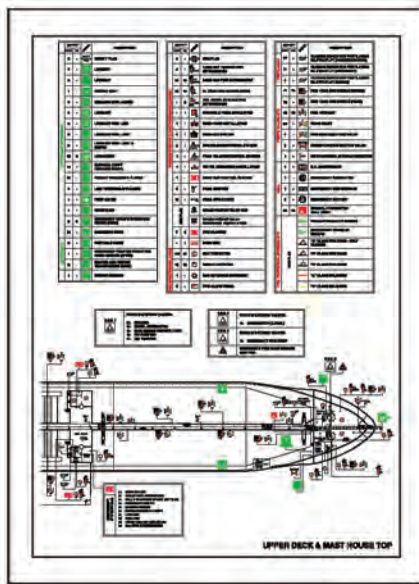


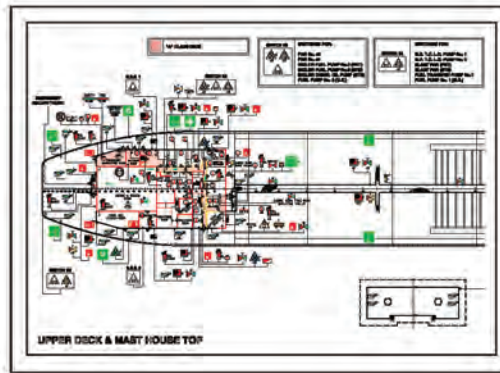
## MARITIME PROGRESS LIMITED

### FIRE PLANS



Fire plans are available in CAD format and are prepared in accordance with the mandatory requirements for fire plans and all similar documentation required by regulatory bodies.

These plans are full colour, laminated drawings to A0+ size and cover most shipboard requirements. They are prepared using the latest internationally recognized IMO/ISO graphical symbols.



### FIRE & SAFETY SYMBOLS CD



Fire control and life-saving symbols offered in AutoCAD format and are self-installing to a symbols library from where the symbols can be dragged and dropped to the required points on the drawing. Symbols comply with ISO 17631 as required by IMO Resolution A 952 (23).  
**No. CD1272Z**

### FIRE PLAN HOLDERS

According to SOLAS 1972 regulations and its subsequent amendments, all ships are required to carry at least three fire plans, one of which must be housed in a weather tight holder fixed outside the Deck House. Additionally holders are often located close to the point of access to the vessel for the convenience of shore based fire-fighting personnel.

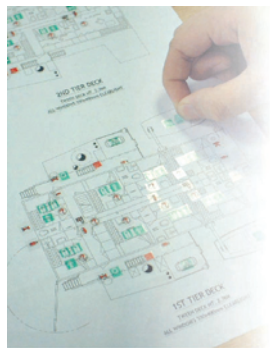
UPVC Fire Plan holder with watertight screw cap.  
Length 1 meter x 110mm OD diameter. Supplied with 2 metal fixing brackets (with rubber inserts) and fire plan label. **No. 2613**



Polyethylene Fire Plan holder with watertight "O" ring seal.  
Lid linked to body by chain. Length 345mm x 125mm diameter.  
Supplied with 2 M8 captive nuts for fixing and a photoluminescent fire plan label. **No. 2610**



### FIRE AND SAFETY PLAN DECALS ISO 17631:2002 as required by IMO Resolution A 952 (23)



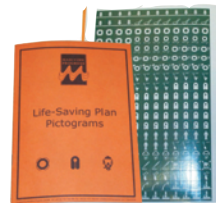
Fire and safety plan "stick-on" decals with white background are used for the production of and changes to Fire and Life-Saving Plans.

These decals comply with Regulation ISO 17631:2002 as required by IMO Resolution A 952 (23).

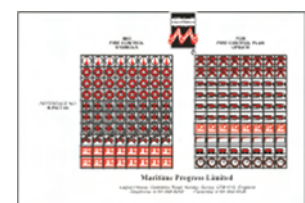
Fire Control Symbols  
**WP2603Z**



Life-Saving Appliances Symbols  
**WP2604Z**



**Also available decals to Resolution A 654**



## Maritime Progress Ltd

Sealand Centre  
3 - 5, Holmethorpe Avenue  
Redhill, Surrey, RH1 2LZ, UK

Tel: +44 1737 763400

Fax: +44 1737 782818

Email: [info@maritimeprogress.com](mailto:info@maritimeprogress.com)

See our page in the Advertising Section for Marine Signage & North American distributors or visit [www.maritimeprogress.com](http://www.maritimeprogress.com)